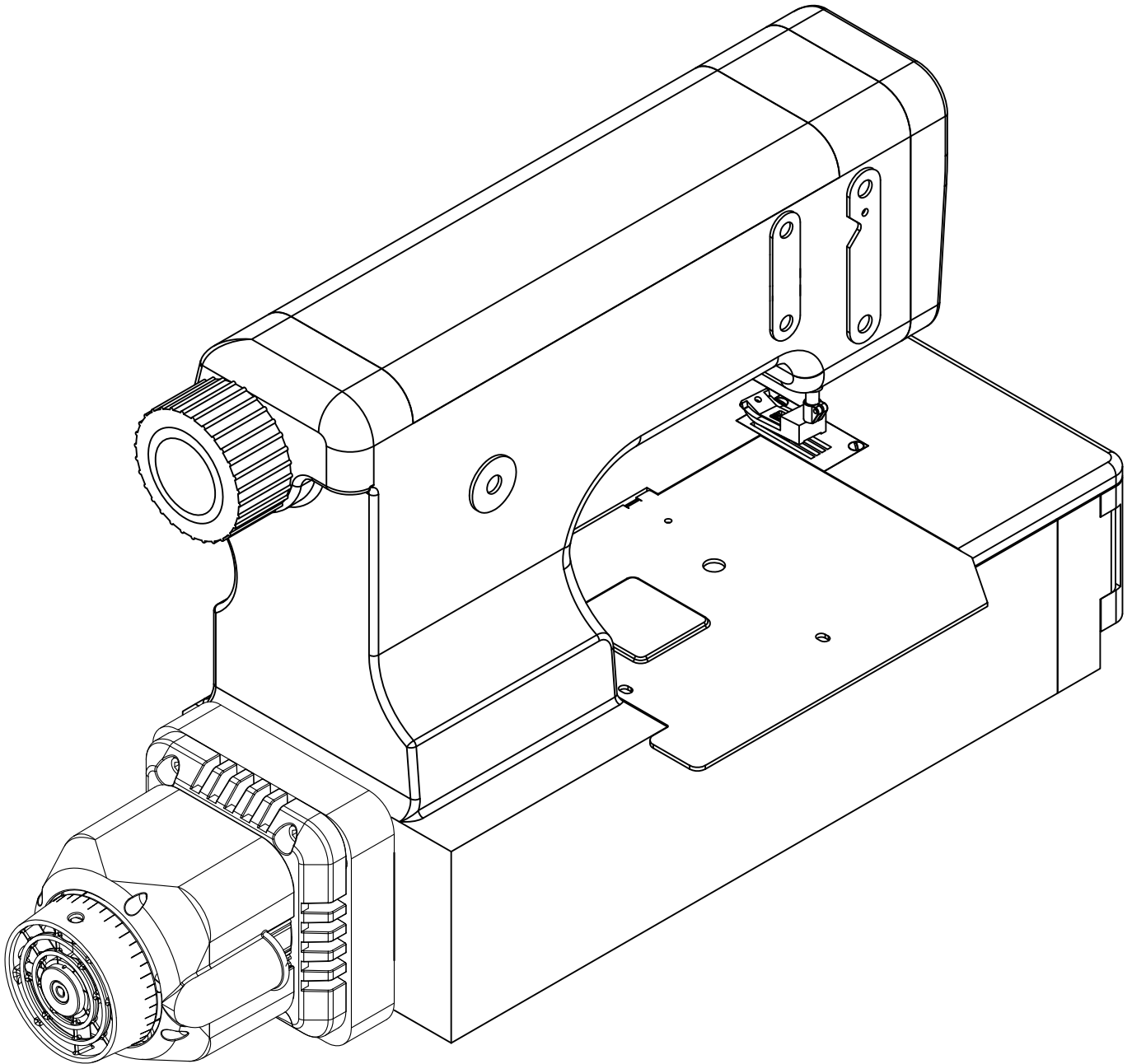
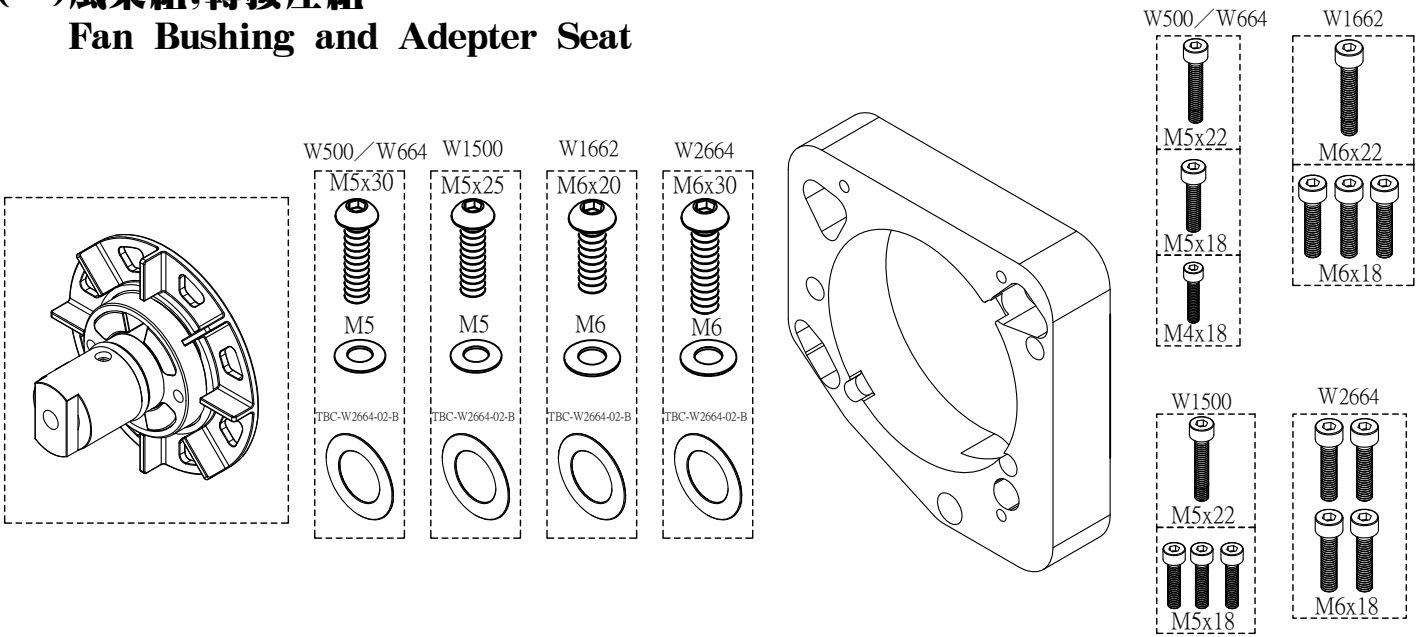


# 節能直驅馬達安裝說明書

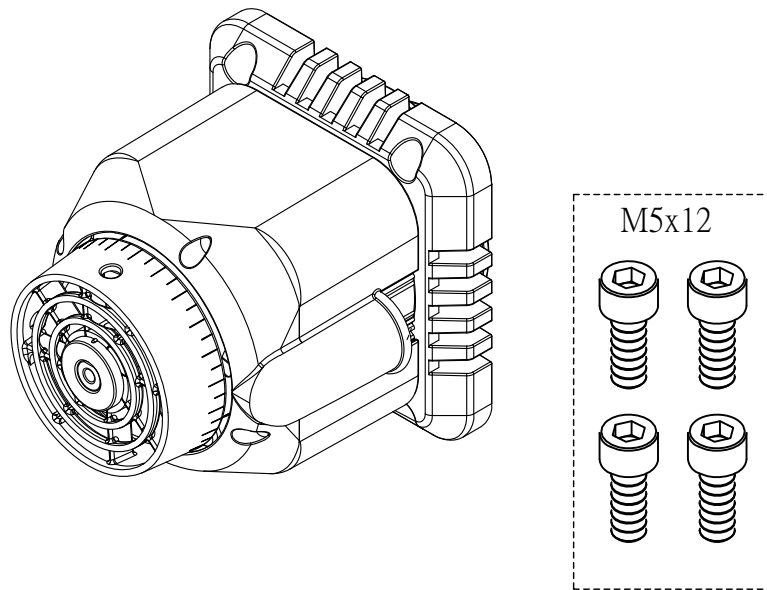
Energy-saving DD servo motor Installation instruction



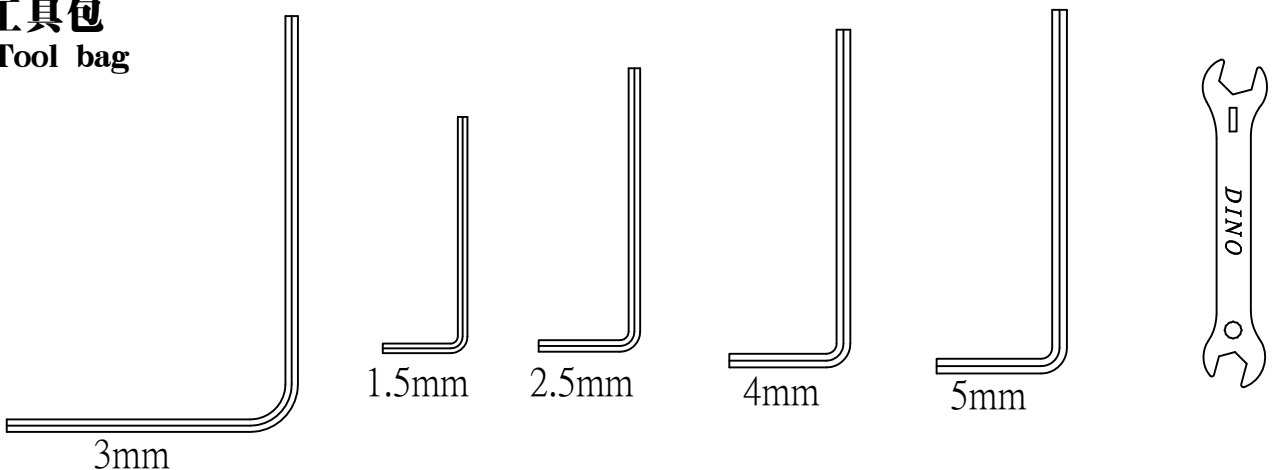
**(一)風葉組,轉接座組**  
**Fan Bushing and Adepter Seat**



**(二)550W直驅伺服電機**  
**550W Direct Drive servo motor**



**※工具包**  
**Tool bag**



**前言 PREFACE :**

- ◎請依本說明書頁次按照順序安裝與調整，以確保您可以在最短時間內得到最佳運轉效果。  
Please follow the instruction manual to ensure getting the best efficiency.

**◎安裝550W馬達**

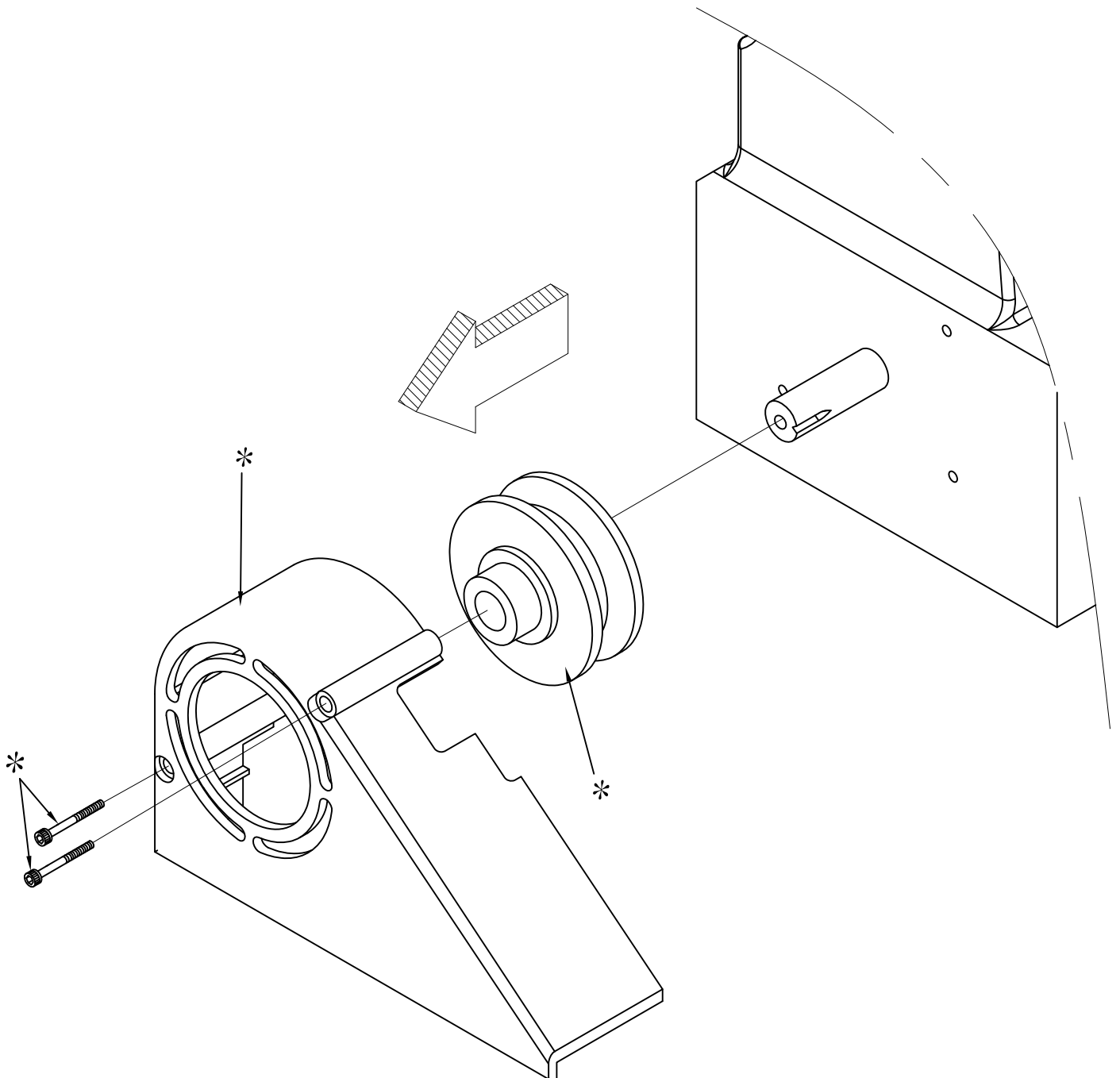
Install 550W Direct Drive servo motor

**(一)拆下原廠配件**

Disassemble the original parts

**(1).卸下機頭後部手輪及蓋子。**

Disassemble the hand wheel and cover of rear side of machine.



**(二)組裝襯套****Install the bushing**

(1)請先 **輕鎖** 螺絲，並依照順序鎖固螺絲。

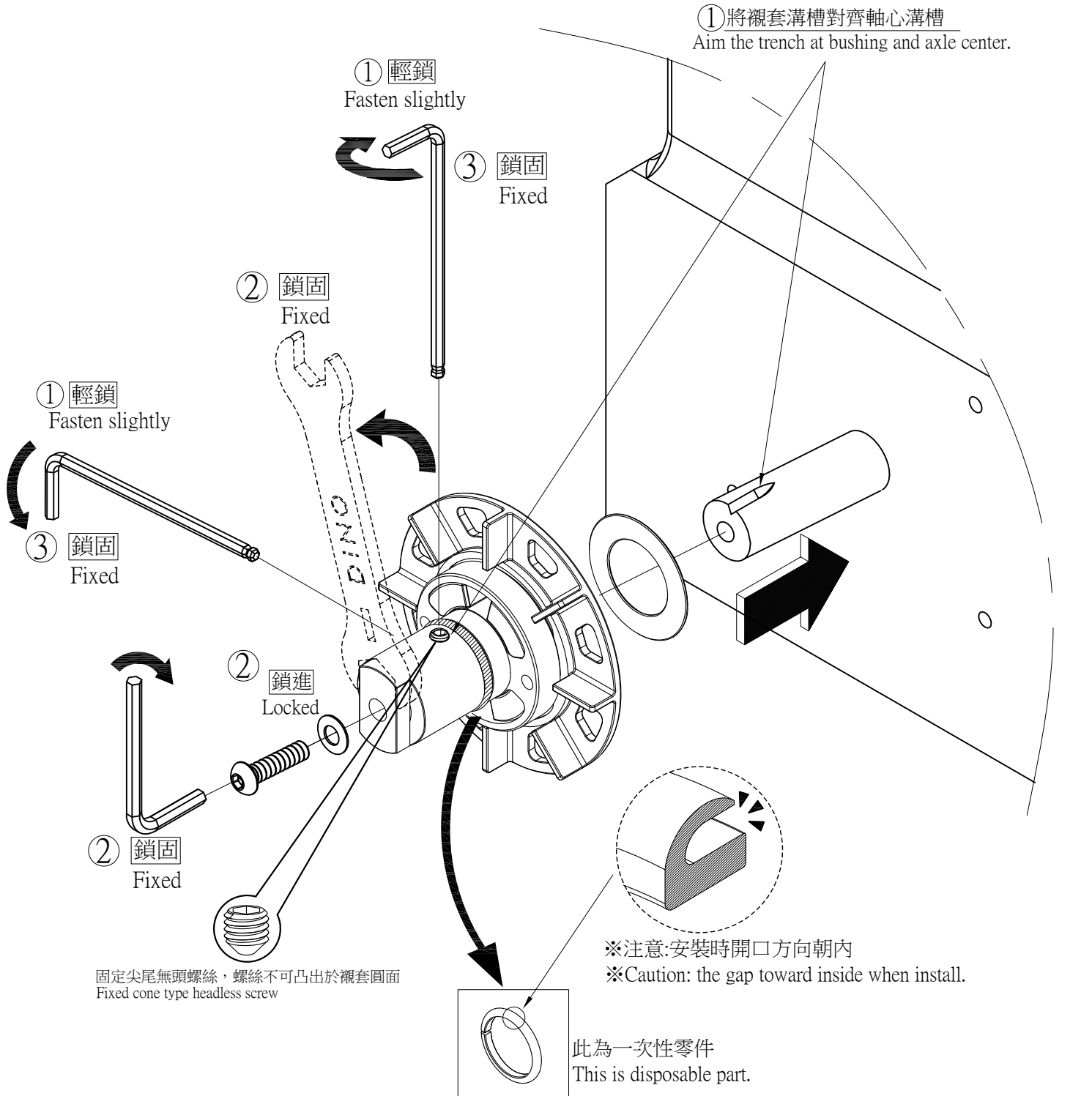
Fasten the screw slightly and following steps to fasten screws.

(2)用開口扳手將襯套固定，再用六角扳手將螺絲輕輕帶緊。

Fix the bushing with the open wrench and tighten it slightly with the hex wrench.

(3)鎖固後，請將兩顆無頭螺絲鎖緊。

Fasten two screws after fixed.

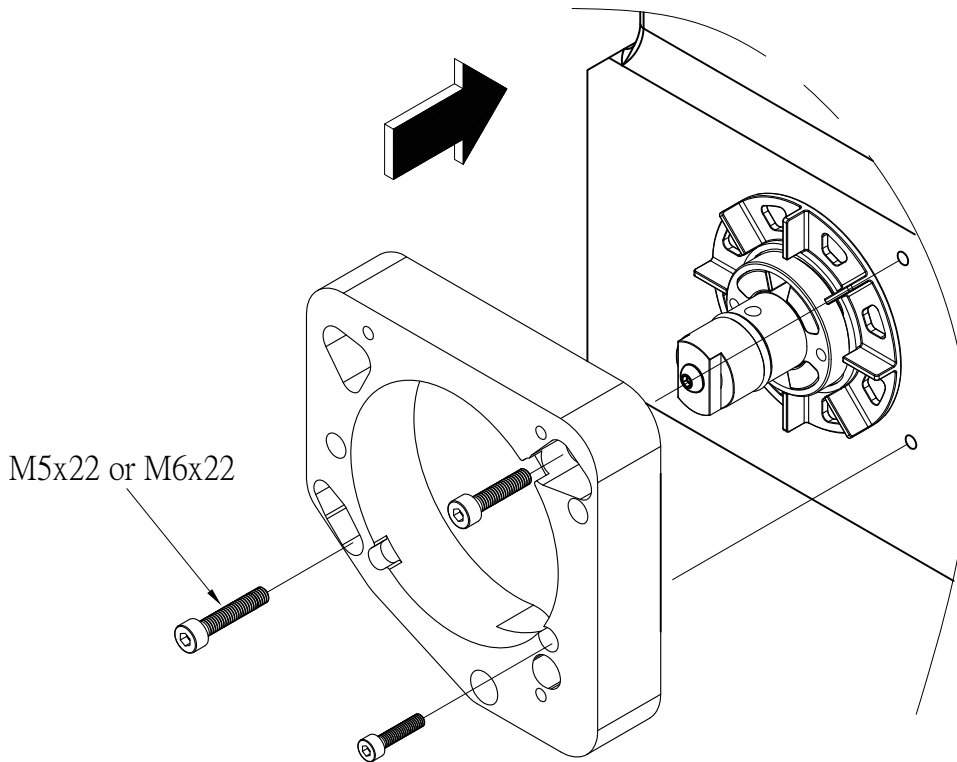


當拆下馬達維修時，馬達裝回前須更換新塑膠鋼C型環。

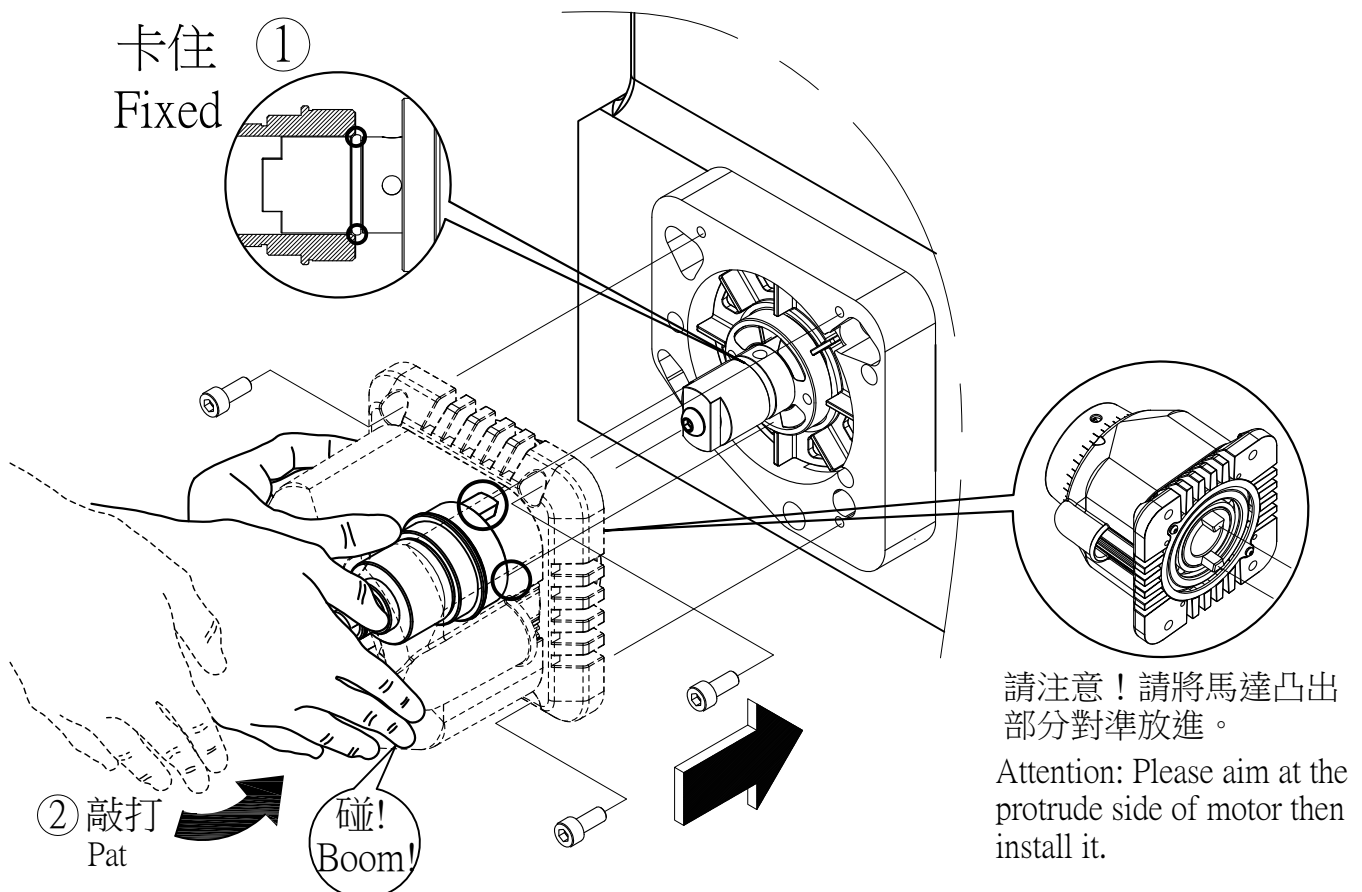
Replace new POM C ring on motor after remove the motor for maintenance.

**(三)組裝馬達 Install the Motor****(1)將後轉接座對準機頭上螺絲孔後鎖上車頭。**

Aim the rear adapter at the screw hole of machine and then fasten it.

**(2)將馬達軸心前方2點對齊襯套上2溝槽後鎖上車頭。**

Aim at the front 2 point of motor axle and 2 trench of bushing and then tighten the screws on the machine head.

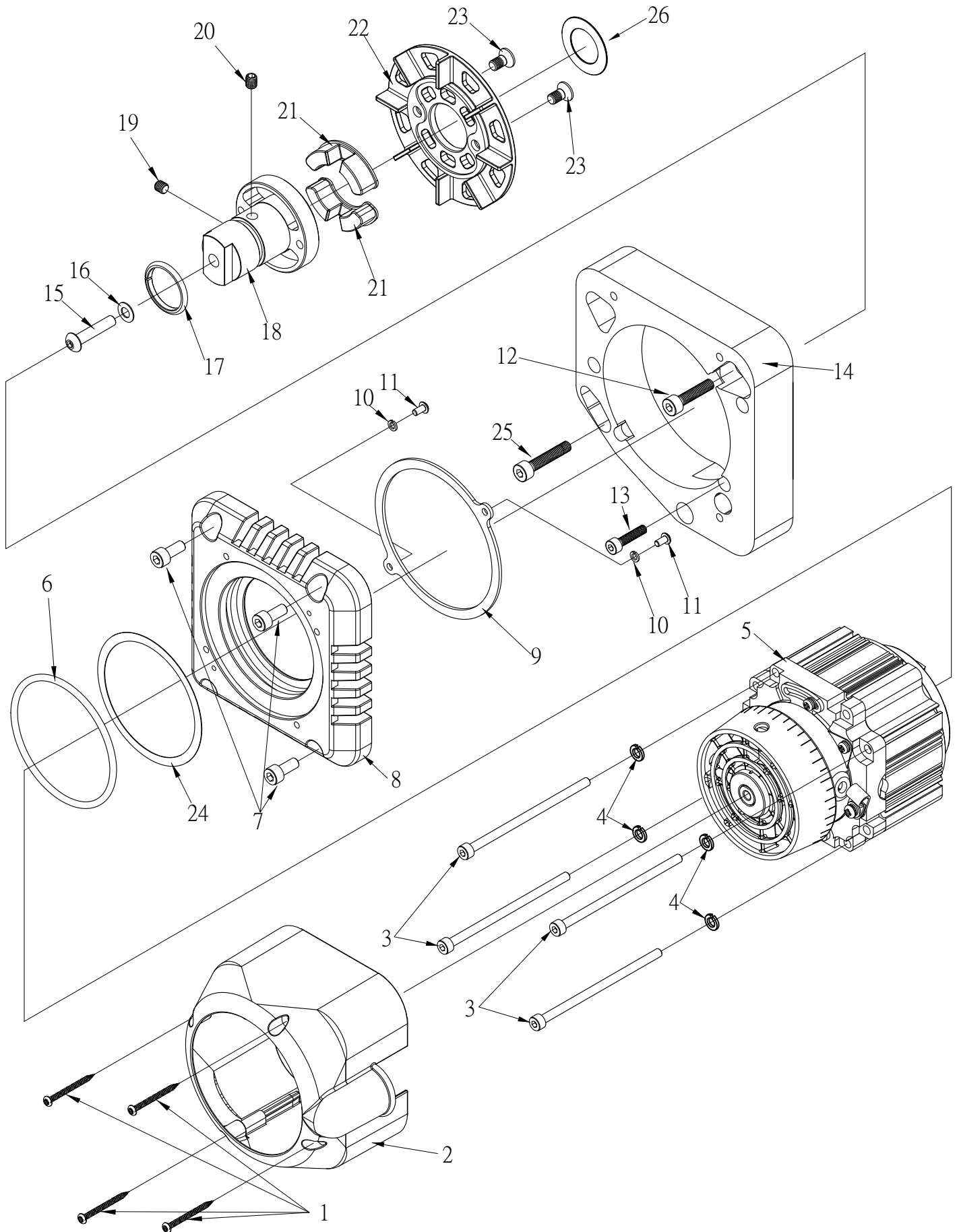


※當組裝馬達卡住時，需用手輕打協助馬達組裝。

Please pat the motor slightly in order to assist to install during fixed motor.

# TBC-II-W500 / W664馬達轉接座(無)分析表

The section list for TBC-II-W500 / W664



**TBC-II-W500 / W664馬達轉接座(無)分析表****The section list for TBC-II-W500 / W664**

序號 Ref.No.	物料編號 Part.No.	名稱 Description	單位用量 Amt.Req.
1	SW0927	圓頭十字特製螺釘 Crossed Round Screw M2.5x30	4
2	TBC-A-03-1	三本車直驅式護罩 Interlock Direct Drive servo motor cover	1
3	SW0184	六角承窩螺絲 Hexagon Socket Screw M4x65	4
4	SW0709-A	彈簧墊圈(黑色) Spring Washer (Black) M4	4
5	TBC-I-550W	550W直驅伺服電機 550W Direct Drive servo motor	1
6	G62	橡膠圈 Plastic Washer	1
7	SW0114	六角承窩螺絲 Hexagon Socket Screw M5x12	3
8	TBC-11	前轉接座 Front Adapter Seat	1
9	TBI-VF2500-03	擋風板 Air Baffle	1
10	SW0736	彈簧墊圈(黑色) Spring Washer (Black) M3	2
11	SW0216	半圓頭六角螺絲 Semi-Round Hexagon Screw M3x6	2
12	SW0181	六角承窩螺絲 Hexagon Socket Screw M5x18	1
13	SW0110	六角承窩螺絲 Hexagon Socket Screw M4x18	1
14	TBC-12-W500	後轉接座 Rear Adapter Seat	1
15	SW0230	半圓頭六角螺絲 Semi-Round Hexagon Screw M5x30	1
16	SW0703	盤型墊圈 Washer M5	1
17	TBC-05	塑膠鋼C型環 POM Ring	1
18	TBC-W500-02-1	襯套 Bushing	1
19	SW0505	無頭螺絲(平尾) Headless Screw(Flat) M5x5	1
20	SW0548	無頭螺絲(尖尾) Headless Screw(Cone) M5x7	1
21	TBC-02-01	緩衝橡膠 Buffer Rubber	2
22	TBC-03-2	風葉 Fan Blade	1
23	SW0411-A	盤頭內六角螺絲 Inner Hexagon Screw M5x10	2
24	TBC-15	麥拉片 Mylar Spacer t=0.25	1
25	SW0190	六角承窩螺絲 Hexagon Socket Screw M5x22	1
26	TBC-W2664-02-B	襯套配件 Bushing washer t=0.5	1