

**FF 6100-TR**  
POCKETWELT AUTOMAT



**HEAD OFFICE**

Basin Expres Yolu Mehmet Akif Mah. Bahariye Cad. No:105  
34303 K.Çekmece / İSTANBUL / TURKEY  
Tel: +90 212 472 01 01  
Fax: +90 212 612 79 65

**FACTORY**

Konya Ankara Yolu. Havaalanı Kavşağı  
No: 213  
42100 Selçuklu / KONYA  
Tel: +90 332 358 01 01  
Fax: +90 332 358 09 00



## FF 6100 TR

### POCKETWELT AUTOMAT



FF 6100-TR



FF 6100-TR



FF 6100-TR



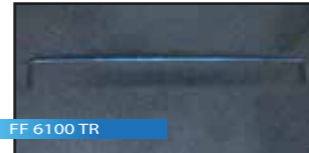
FF 6100-TR / AP



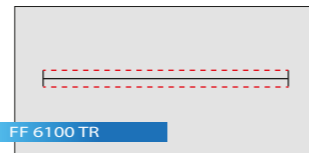
FF 6100-TR



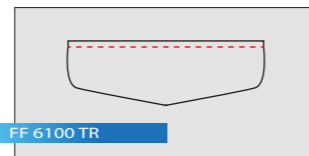
FF 6100-TR / ZP



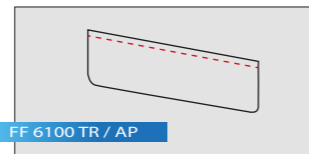
FF 6100 TR



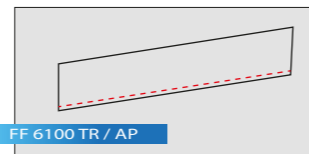
FF 6100 TR



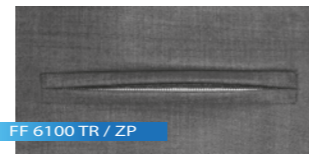
FF 6100 TR



FF 6100 TR / AP



FF 6100 TR / AP



FF 6100 TR / ZP



FF 6100 TR / ZP

Max. Sewing Speeds : 3.000 r.p.m  
 Max. Stitch Length : 0,5 or 3 mm  
 Stitch type : 301 ( Lockstitch )  
 Needle Distances : 8 - 22 mm Standart  
 24 - 36 mm Optional  
 Connection Voltage: Single-Phase A.C. 230 V, 50/60 Hz  
 Air Pressure : 6 bar

## FF 6100 TR

### POCKETWELT AUTOMAT

The sewing unit for piped pockets FF 6100-TR allows an efficient and flexible production of straight and optionally slanted welt pockets, flap pockets and inside pockets for the production of men's and lady's jackets, coats, blazers, anoraks and trousers on a maximum quality level.

A wide range of optional equipment is available for the various fields of application

#### TECHNICAL SPECIFICATIONS

Brother Model C series direct-drive Needle transport lock stitch sewing head  
 Beijer Electronics, Windows Based 256 Million Colour Supported Touch Control Panel  
 Easy to use, with Pictures on the Operator Panel and with 50 Different Programming and Cycle Operation Possibilities  
 PLC Control Unit Westing House/Teeco AC Servo Motor & Driver Controlled Clamp Unit  
 Efka 550 W Mini Stop DC or Direct Drive DC Servo Sewing Motor  
 Linear Motor Controlled Middle Knife System  
 Laser Photocell System Measuring the Size of the Pockets flaps and Sewing them  
 Front-Middle-Rear .Four Laser Reference Lines for stitch control  
 Pocket Welt length sizes from 20 mm to 200 mm  
 Step Motor Controlled Moving Corner Knife System (6100/6200 series)  
 Corner Knives and Connection Unit providing 3 Dimensional Adjustments  
 Programmable start and end back tack or optionally adjustable stitch condensing  
 With double and single welt pocket device  
 Automatic change system for quick attachment replacement (single/double welt)  
 Holder-clamp for Pocket Flap and Pocket Bag on Right or Left  
 Lifting opportunity of the Sewing Head for Easy Maintenance by the Technician  
 Automatic thread Cutting System in the Beginning and End of Seam  
 Upper Thread Monitor and Bottom Thread Monitor  
 Micro Adjustment Unit for Right-Left Gramer  
 Changeable Needle-bar, Stitch-plate and sheet-plate set between 6 mm and 36 mm

#### OPTIONS

- Automatic tape feeder
- Vacuum Motor (220 AC or 380 AC) and Connection Unit
- Direct Connection Unit to Central Vacuum System
- Universal Stacker Unit
- Roll-off device Unit for small Pieces
- Fabric stretching bar
- Sandwich Clamp Connection Unit

#### DIMENSIONS

Length : 140 cm  
 Width : 80 cm  
 Height : 120 cm  
 Packing Size : 164 cm x 94 cm x 145 cm  
 Machine Net Weight : approx. 200 kg  
 Machine Gross Weight : approx. 240 kg

#### FF 6100 TR Piped Pocket Automatic Machine with Needle Transport

Automatic Machine for All Pockets Application with/without Flaps, Single or Double welt  
 Performance: 8 hours/2.300-2.600 pieces

#### FF 6100 TR / AP Slanted Piped Pocket with Needle Transport Automatic machine

You can sew Slanted Pocket welts on Body, Lining and Breast. Also you can use as ordinary straight Pocket welt (Single/double) automat  
 Performance: 8 hours/2.000-2.200 pieces

#### FF 6100 TR / ZP Zip Lining Automatic Machine with Needle Transport

Operation with endless zipper on rolls. Automatic system for the placement of the zip in the pocket.  
 End cutter of the zip after sewing. Also you can use as ordinary straight Pocket welt (Single/double) without zipper.  
 Performance: 8 hours/1.900-2.000 pieces

#### FF 6100 TR / AP / ZP Zip lining Automatic Machine with Slanted Pocket Needle Transport

Developed Pocket Welt Automat for all kind of slanted pocket models with/without zipper.  
 Performance: 8 hours/1.900-2.000 pieces