

**QX 9300 - IX**  
PLEAT AND DART AUTOMAT



**HEAD OFFICE**

Basin Expres Yolu Mehmet Akif Mah. Bahariye Cad. No:105  
34303 K.Çekmece / İSTANBUL / TURKEY  
Tel: +90 212 472 01 01  
Fax: +90 212 612 79 65

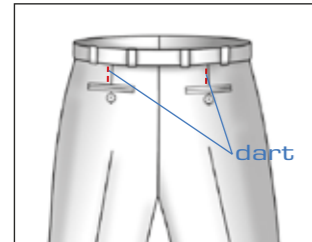
**FACTORY**

Konya Ankara Yolu. Havaalanı Kavşağı  
No: 213  
42100 Selçuklu / KONYA  
Tel: +90 332 358 01 01  
Fax: +90 332 358 09 00



## QX 9300 - IX

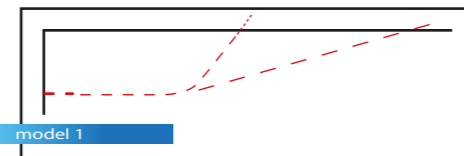
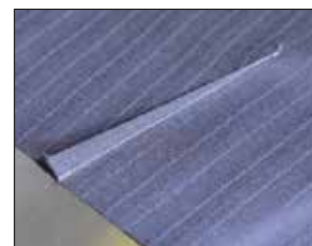
### PLEAT AND DART AUTOMAT



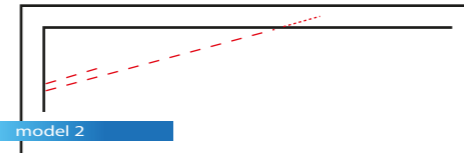
dart



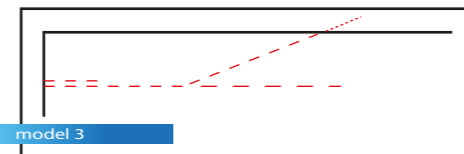
pleat



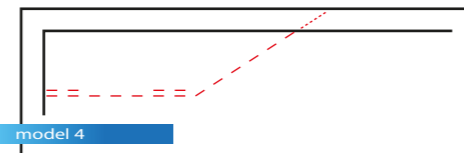
model 1



model 2



model 3



model 4



model 5

Max. Sewing Speeds : 4.500 r.p.m

Max. Stitch Length : 0,5 or 5 mm

Stitch type : 301 ( Lockstitch )

Darts Length : 10 - 250 mm

Darts Width : 3 - 40 mm

Connection Voltage: Single-Phase A.C. 230 V, 50/60 Hz

Air Pressure : 6 bar



QX 9300 - IX



QX 9300 - IX



QX 9300 - IX

## QX 9300 - IX

### PLEAT AND DART AUTOMAT

Automatic short seamer QX 9300-IX for darts and waistband pleats. Darts and pleats play an important role for the fit and for the overall visual appearance of trousers. Consistent quality and economic processing on a machine that is easy to operate. The QX 9300-IX short seam automatic sewing machine meets this requirement

#### TECHNICAL SPECIFICATIONS

Brother Direct Drive Sewing Head

Beijer Electronics , Windows Based 256 Million Colour Supported Touch screen Control Panel

Easy to use, with Pictures on the Operator Panel and with 50 Different Programming

Sequential/Cycle Program operation for different pleat and dart models

PLC Control Unit

Teco (WestingHouse) AC Servo Motor& Driver controlled Clamp unit

Programmable start and end back tack or optionally adjustable stitch condensing

Sewing of different seam types in any desired sequence, so e.g. different darts and

waistband pleats can be set on the same machine

Excellent quality; high repeating accuracy; seams and pleats with exact measurements.

Only brief instructions required due to the simple and operator-friendly handling

Darts are sewn from the fabric edge to the point. This ensures a slim, neat point with no untidy "dimples"

Fixing-needles-system: To assure the sliding of the folded fabric

Sandwich Clamp System with compressing setup between conveyor sheets to prevent fullness while sewing

All types of seams up to 250 mm seam length

Automatic thread trimming and cleaning system at the end of sewing

Height-adjustable machine frame enabling side-operation

Error Detecting Systems

Thread monitor

#### OPTIONAL

Extra Reference Lasers

#### PERFORMANCE

2.500-3.500 Dart-Pleat/ 8 Hours

#### DIMENSIONS

Length : 110 cm

Width : 80 cm

Height : 130 cm

Packing Size : 127 cm x 89 cm x 145 cm

Machine Net Weight : approx. 170 kg

Machine Gross Weight : approx. 210 kg